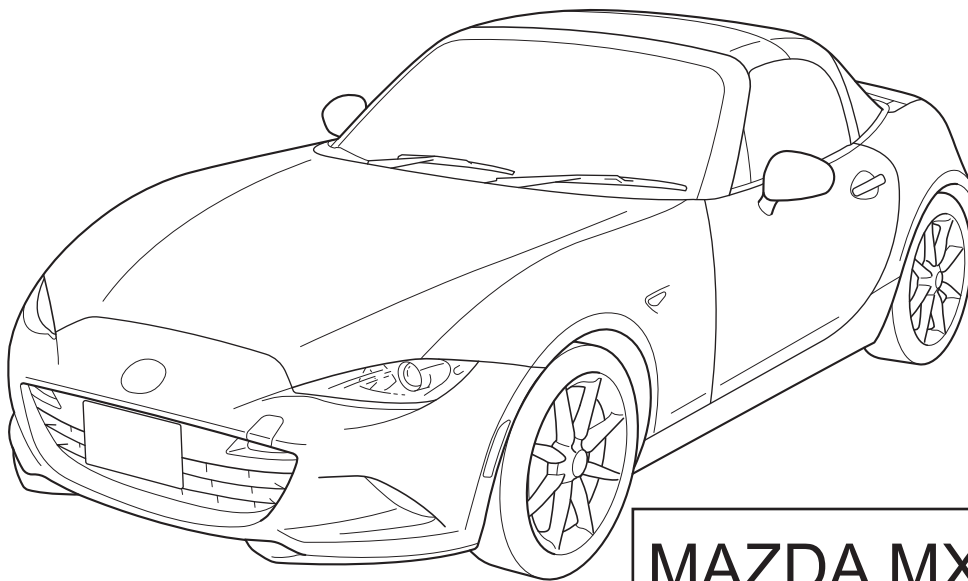


# MAZDA

<b>GB</b> CONSOLE SHELF NET Installation Instructions	<b>N</b> KONSOLLHYLLENETT Monteringsveiledning
<b>D</b> KONSOLENFACHNETZ Einbauanleitung	<b>S</b> NÄT FÖR KONSOLHYLLA Monteringsanvisning
<b>E</b> RED DE ESTANTE DE CONSOLA Instrucciones de Montaje	<b>SF</b> ETUKONSOLIN HYLLY Asennusohje
<b>F</b> FILET-TABLETTE DE CONSOLE Instructions de Montage	<b>CZ</b> SÍTKA DO PŘIHRÁDKY VE STŘEDOVÉ KONZOLE Návod k Montáži
<b>I</b> RETICELLA RIPIANO CRUSCOTTO Istruzioni di Montaggio	<b>H</b> TARTÓHÁLÓS POLC Beszerelési Utasítása
<b>P</b> REDE DA PRATELEIRA DO CONSOLE Instruções de Montagem	<b>PL</b> SIATKA PÓLKI KONSOLI Instrukcja Instalowania
<b>NL</b> CONSOLEREKJE Inbouw-Instructie	<b>GR</b> ΔΙΧΤΥ ΡΑΦΙΟΥ Υ ΚΟΝΣΟΛΑΣ Οδηγίες Τοποθέτησης
<b>DK</b> HYLDENET TIL KONSOL Monteringsveiledning	<b>RU</b> СЕТКА ДЛЯ ПОЛОЧКИ КОНСОЛИ Инструкции по установке



MAZDA MX-5 ND

Part No: **NA1P V0 540**

Date: 30-03-2015

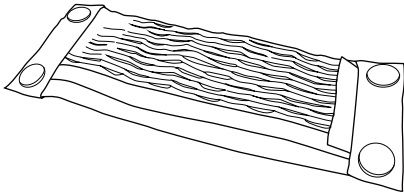
© Copyrights MAZDA

Sheet 1 of 4

Expert Fitment Required  
Montage durch Fachwerkstatt erforderlich  
Montaje sólo por el concesionario  
Montage par spécialiste nécessaire  
E' necessario in officina specializzata  
Especialista em montagem requerido  
Montage door vakman nodig  
Montage ved professionelt værksted påkrævet  
Nødvendig med montering fra fagvejværksted  
Verkstadsmontage erfordras  
Asennus tarpeen merkkikorjaamossa  
Montáž ve specializované dílně nutná  
A szereléshez szakműhely kell  
Konieczny montaż przez warsztat specjalistyczny  
Να τοποθετεί από συνεργείο  
Необходима подгонка специалистом



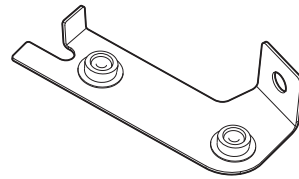
**A**



X 1

**B**

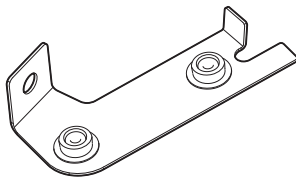
**(LH)**



X 1

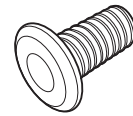
**C**

**(RH)**



X 1

**D**



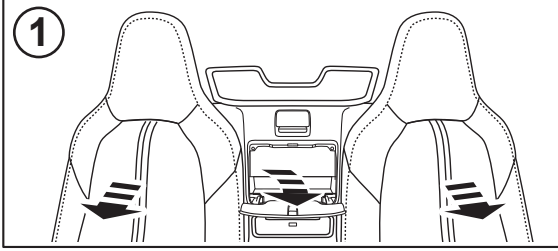
X 2

**E**

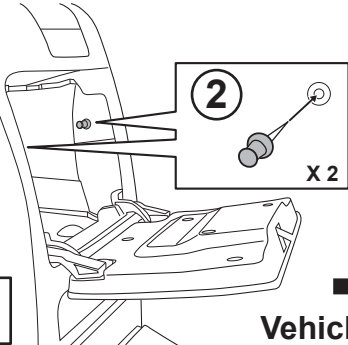
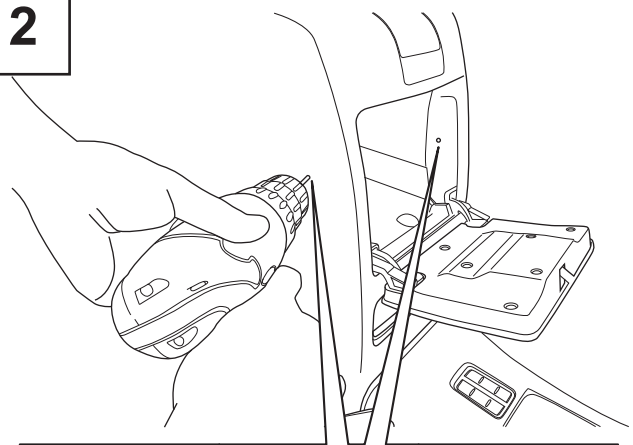


X 2

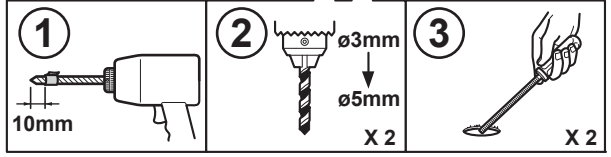
1



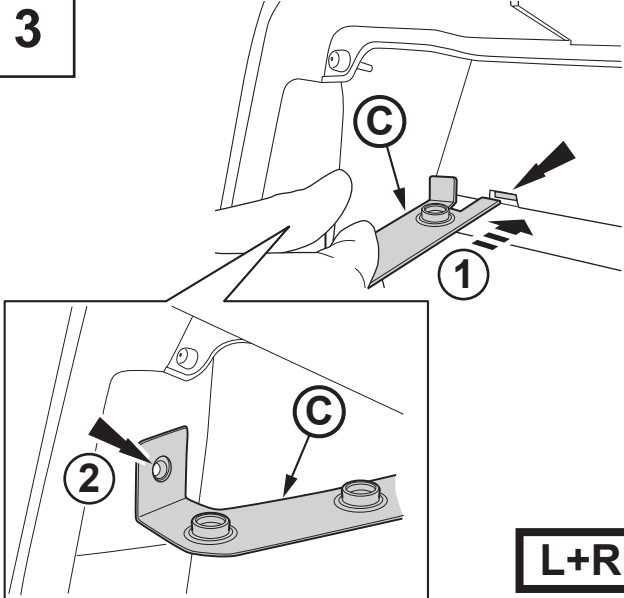
2



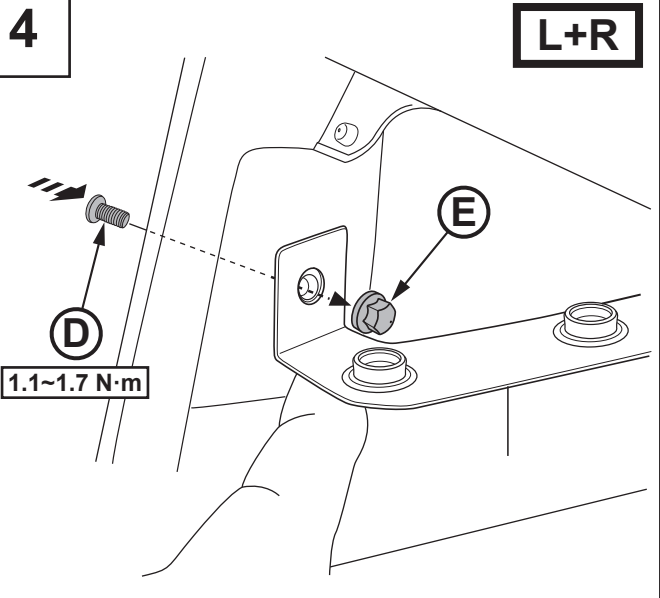
Vehicle front



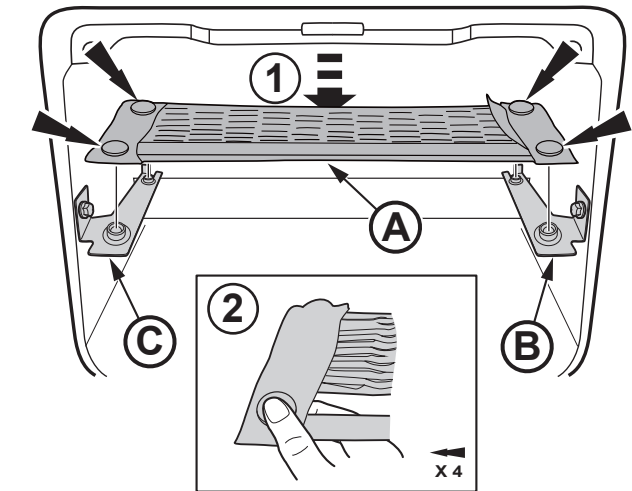
3



4



5



6

